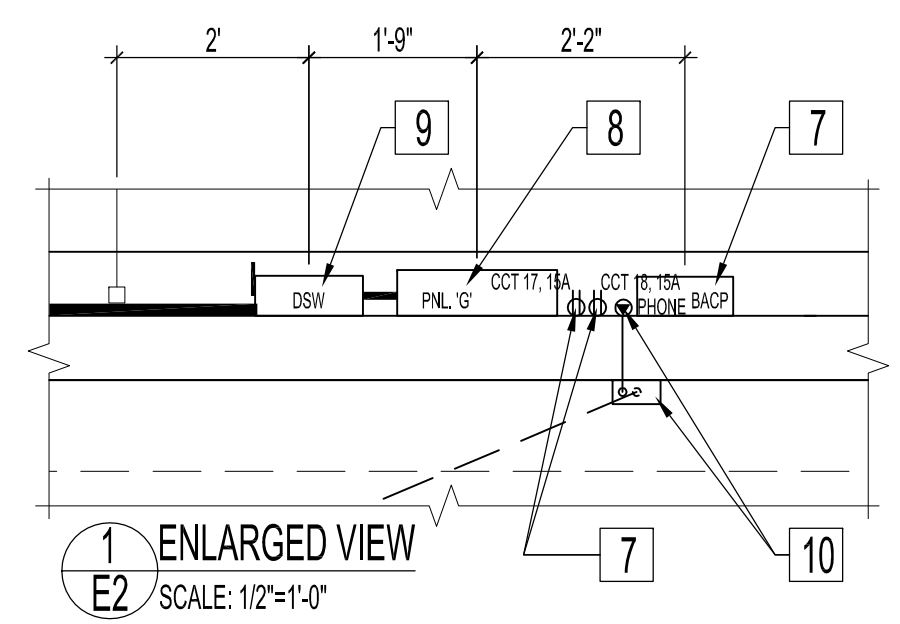
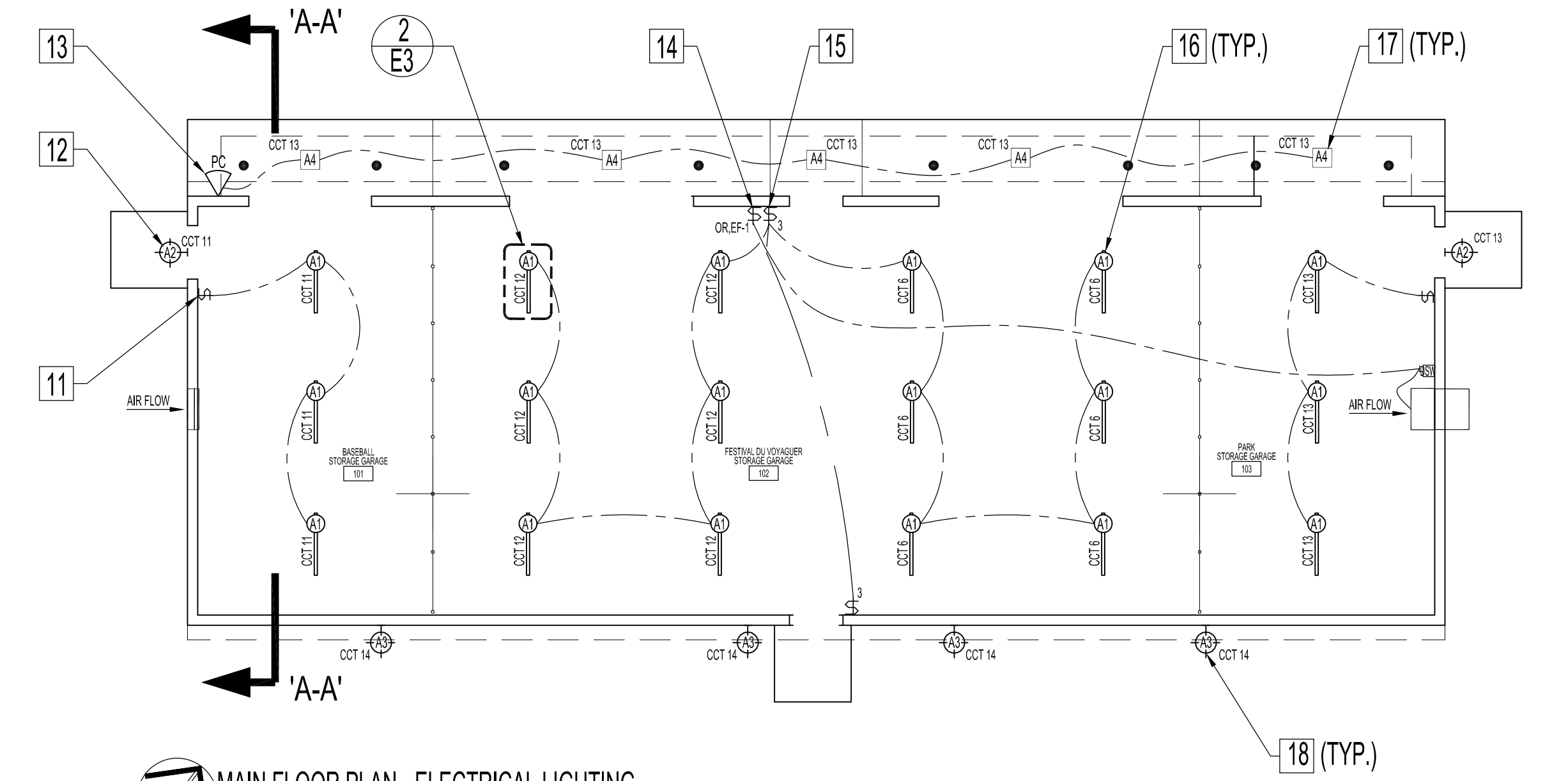


MAIN FLOOR PLAN - ELECTRICAL POWER
SCALE: 1/8"=1'-0"



1 ENLARGED VIEW
SCALE: 1/2"=1'-0"



MAIN FLOOR PLAN - ELECTRICAL LIGHTING
SCALE: 1/8"=1'-0"

MAIN FLOOR ELECTRICAL POWER NOTES:

ALSO SEE E1 DWG NOTES & E4 DWG.
WIRE ELECTRICAL COMPONENTS AS PER WIRING SCHEDULE.
CONTRACTOR TO SUPPLY & INSTALL REQUIRED INTERIOR WALL SUPPORT BLOCKING FOR SURFACE MOUNTED ELECTRICAL PANELBOARD 'G', FUSED DISCONNECT SWITCH, BUILDING SECURITY ALARM PANEL AND COMPONENTS LISTED BELOW PRIOR TO INTERIOR SHEATHING INSTALLATION.

- 1 C.S.T.E. METER CABINET & METER SOCKET BY ELECTRICAL CONTRACTOR. CTS, PTS & METER INSTALLATIONS BY MANITOBA HYDRO.
- 2 (12) INTERIOR DEVICE BOXES, DUPLEX RECEPTACLES & COVER PLATES.
- 3 (2) COMBINATION RATE-OF-RISE & FIXED TEMPERATURE HEAT DETECTORS WITH POWER SUPPLIES & RELAYS. SUPPLY & INSTALL OCTAGON BOXES & EMT'S FROM PANELBOARD 'G' TO CEILING OCTAGON BOXES. WIRING BY OTHERS. ALSO SEE E4 DWG.
- 4 DEDICATED 30AMP CIRCUIT & NEMA-4 TOGGLE DISCONNECT SWITCH FOR SIDE WALL EXHAUST FAN (EF-1). MOUNT & SECURE DISCONNECT SWITCH TO FAN OR ON WALL CLOSE TO FAN LOCATION. SUPPLY & INSTALL LIQUID-TIGHT FLEXIBLE METAL CONDUIT (LFMC) RATED TO 140° CELSIUS (MINIMUM) FROM DISCONNECT SWITCH TO FAN.
- 5 (4) DEDICATED 15AMP GFCI PROTECTED EXTERIOR DUPLEX RECEPTACLES WITH WEATHER-RESISTANT COVER PLATES.
RECEPTACLES: MODEL # W7589-TRE, BLACK.
WEATHER-RESISTANT COVERS: MODEL # 4990. GREY.
- 6 MONITORED CO & NO2 STAND ALONE TOXIC & COMBUSTIBLE GAS DETECTION TRANSMITTERS WITH E3 WIRE CAGES & DEDICATED 120 VOLT, 15 AMP CIRCUIT FOR UNHEATED SPACE. MOUNT & SECURE GAS DETECTION TRANSMITTERS TO WALL (SEE SCHEDULE FOR HEIGHTS). INTERCONNECT TRANSMITTERS TO FAN (EF-1). SUPPLY & INSTALL DEDICATED 115V/15A CIRCUIT, 24V/120V CONTACTORS & RELAYS AS PER MANUFACTURERS INSTALLATION INSTRUCTIONS FOR UNHEATED SPACE INSTALLATIONS. WIRING FROM GAS TRANSMITTERS BACK TO BUILDING CONTROL PANEL FOR SYSTEM MONITORING BY OTHERS.
TOXIC & COMBUSTIBLE GAS DETECTION SEQUENCE OF OPERATION:
DETECTION SYSTEM SENSES CO OR NO2 GASES AT TRANSMITTERS. A SIGNAL IS SENT FROM THE APPROPRIATE CO OR NO2 TRANSMITTERS TO EXHAUST FAN (EF-1). THE FAN THEN EXTRACT GASES FROM THE BUILDING SPACE THROUGH EXTERIOR GABLE END WALL. OCCUPANTS TO HAVE THE OPTION TO OVERRIDE GAS DETECTION SYSTEM TO VENTILATE BUILDING ON DEMAND VIA SPECIFIED TIMER SWITCH. SEE ELECTRICAL NOTE 14.
- 7 SUPPLY & INSTALL (2) DEDICATED 120V, 15AMP CIRCUITS & 4" X 4" X 2" DEVICE BOX TO POWER BUILDING SECURITY ALARM CONTROL PANEL & HEATERS. RUN EMT FROM PANELBOARD 'G' TO DEVICE BOX. MOUNT BOX 5'-6" FROM FINISHED FLOOR TO CENTER OF BOX.
- 8 120 / 240V / 1φ ELECTRICAL SERVICE ENTRANCE PANELBOARD 'G' TO BE INSTALLED IN FESTIVAL DU VOYAGUER SIDE (ROOM 102). SURFACE MOUNT TO WALL 5'-0" (MIN.) FROM CENTER OF PANELBOARD TO TOP OF FINISHED CONCRETE FLOOR. CONTRACTOR TO SUPPLY & INSTALL BREAKERS AS SPECIFIED.
- 9 MAIN BUILDING FUSED DISCONNECT SWITCH. MOUNT ON WALL. WIRE TO PANEL 'G'.
- 10 EMT FROM EXTERIOR NID TO INTERIOR RECESSED DEVICE BOX FOR TELEPHONE PORT. MOUNT BOX CLOSE TO BUILDING SECURITY ALARM PANEL AS SHOWN.

MAIN FLOOR ELECTRICAL LIGHTING NOTES:

- ALSO SEE NOTES, E1 DWG.
- 11 (2) INTERIOR SINGLE POLE LIGHT SWITCHES & STAINLESS STEEL COVER PLATES (ROOM 101 & 103).
 - 12 (2) EXTERIOR SECURITY LIGHT FIXTURES. MOUNT TO WALL CENTERED WITHIN SIDING BOARDS & ABOVE MAIN DOORS AT ± 9'-6" (MINIMUM).
 - 13 RECESSED SOFFIT LIGHT PHOTOCELL. MOUNT ON NORTH / EAST CORNER SIDE 2'-0" FROM ROOF PEAK TO CENTER OF FIXTURE & AIM PHOTOCELL IN NORTH DIRECTION. CONTRACTOR TO SUPPLY & INSTALL 1/2" EMT STUB FROM ABOVE INTERIOR TOP PLATE THROUGH WALL. PULL WIRE TO PHOTOCELL AND CONNECT TO CIRCUIT. WIRE IN PARALLEL TO 5 SOFFIT RECESSED FIXTURES. SEAL EXTERIOR WALL PENETRATION.
 - 14 (1) COMMERCIAL GRADE ELECTRONIC WALL SWITCH TIMER TO OPERATE EXHAUST FAN (EF-1) MODEL # INTERMATIC E1200 SERIES. INTER-CONNECT SWITCH TO FAN (EF-1).
 - 15 (2) INTERIOR 3 WAY LIGHT SWITCHES, ROOM 102.
 - 16 (18) 2-LAMP COLD WEATHER, THERMALLY PROTECTED FLUORESCENT LIGHT FIXTURES (TYPE A1) COMPLETE WITH WIRE GUARDS. PROVIDE WOOD 2X4 BLOCKING AND MOUNT CENTER AND FLUSH BETWEEN CEILING JOISTS. SECURE & ANCHOR FIXTURES TO UNDERSIDE OF 2X4" BLOCKING.
 - 17 (5) EXTERIOR SECURITY LIGHT FIXTURES. RECESS MOUNT & CENTER WITHIN SOFFIT SPACES. WIRE TO PHOTOCELL. ALSO SEE NOTE 13.
 - 18 (4) EXTERIOR SECURITY LIGHT FIXTURES. MOUNT BELOW OVERHANGS ON EXTERIOR WALL AT ± 11'-2" (MINIMUM) AND CENTERED WITHIN SIDING BOARDS.

TOXIC & COMBUSTIBLE GAS DETECTION SCHEDULE

TAG	NO.	SERVES	MANUFACTURER	FIRST ALARM SET POINT (TLV-TWA)	SENSOR ALARM SET POINT (TLV-STEL)	MONITOR / SENSOR LOCATION	RADIUS OF COVERAGE	NOTES
CO	1	RM 101, 102 & 103	HONEYWELL ANALYTICS ESSAHNSO STAND ALONE CO MONITOR	12 PPM	25 PPM	3'-0" - 5'-0" ABOVE FLOOR	50'-0"	WIRING FROM GAS DETECTION TRANSMITTER TO BUILDING ALARM CONTROL PANEL BY OTHERS
NO2	1	RM 101, 102 & 103	HONEYWELL ANALYTICS ESSAHNSO STAND ALONE NO2 MONITOR	72 PPM	2 PPM	1'-0" BELOW CEILING JOISTS	50'-0"	WIRING FROM GAS DETECTION TRANSMITTER TO BUILDING ALARM CONTROL PANEL BY OTHERS

LIGHT FIXTURE & HEAT DETECTION SCHEDULE

TYPE	QTY.	MANUFACTURER	CATALOGUE No.	LAMP	DESCRIPTION
FL	18	LITHONIA	Z338M/VOLTGE8/10S	120V, 2 X 32 WATT	FLUORESCENT STRIP LIGHTING WITH WIRE GUARD & REFLECTOR. BALLAST: ICN2P32N (ADVANCE) REFLECTOR: W238MR484
HL	2	RAB	WP2CH70PC	120V, 70 WATT	METAL HALIDE CUTOFF WALL-PACK FIXTURE WITH BUTTON PHOTOCELL. CONTRACTOR TO SUBMIT SHOP DRAWINGS OF WIRE GUARDS FOR APPROVAL. GUARDS TO ENCLOSE ENTIRE LIGHT FIXTURE.
HL	4	RAB	WP2CH100TIPC	120V, 100 WATT	METAL HALIDE CUTOFF WALL-PACK FIXTURE WITH BUTTON PHOTOCELL & VANDAL-PROOF WIRE GUARDS. CONTRACTOR TO SUBMIT SHOP DRAWINGS OF WIRE GUARDS FOR APPROVAL. GUARDS TO ENCLOSE ENTIRE LIGHT FIXTURE.
RA	5	INDY	M8D-76-70-W782L-C-1-1-CG-WH-WET	70E, 2X70W T5 MH, 120 / 270V, ELECTRONIC	RECESSED METAL HALIDE FIXTURE CONNECTED TO EXTERIOR REMOTE PHOTO-CELL MOUNTED ON NORTH SIDE OF ROOF.
PH	2	GE SECURITY	CR202		COMBINATION RATE-OF-RISE AND FIXED TEMPERATURE HEAT DETECTION DEVICES OR APPROVED EQUAL.

ALL NEW LIGHTING FIXTURES AND BALLASTS TO BE POWERWARRANT APPROVED.
LIGHTING FIXTURE QUANTITIES SHOWN ABOVE ARE FOR REFERENCE ONLY. CONTRACTOR IS RESPONSIBLE FOR QUANTITY TAKE-OFF FROM DRAWINGS.

PANELBOARD 'G'
120/240V/1φ

DEMAND LOAD	CON/CTD LOAD	CIRCUIT DESCRIPTION	CIRCUIT NO. 15A 1P, (WITH BREAKERS) UNLESS OTHERWISE NOTED	CIRCUIT DESCRIPTION	CON/CTD LOAD	DEMAND LOAD
		RECEPTACLE: RM. 101	1	RECEPTACLE: RM. 102 (NORTH WALL)		
		RECEPTACLE: RM. 103	3	RECEPTACLE: RM. 102 (SOUTH WALL)		
		EXHAUST FAN (EF-1), RM. 103	5	LIGHTS: RM 102		
		RECEPTACLE: EXT. GFCI	7	RECEPTACLE: EXT. GFCI		
		RECEPTACLE: EXT. GFCI	9	RECEPTACLE: EXT. GFCI		
		LIGHTS: INT. RM 102	11	LIGHTS: RM 102		
		HEAT DETECTORS	13	LIGHTS: EXT. SOUTH		
		BUILDING ALARM CONTROL PANEL	15	CO & NO2 GAS DETECTION SYSTEM		
		SPARE	17	BUILDING ALARM CONTROL PANEL		
		SPARE	19	RECEPTACLE: EXT. GFCI		
		SPARE	21	SPARE		
		SPARE	23	SPARE		

WHERE SPARE IS INDICATED ON WIRING SCHEDULE ABOVE CONTRACTOR SHALL PROVIDE (3) EXTRA BREAKERS FOR FUTURE CIRCUITS, BREAKERS AS SPECIFIED.

NOTES:
ALSO SEE CIVIL, ARCHITECTURAL, STRUCTURAL, MECHANICAL & ROUGH-IN WORK FOR SECURITY SYSTEM DWGS.

ORIGINAL STAMPED BY: DOUG PALEY
DATE: 2012.03.09

No.	REVISION/DESCRIPTION	BY	DATE

DRAWN	RCP	CHECKED	DAP	DESIGNED	RCP	APPROVED	DAP

THE CITY OF WINNIPEG
PLANNING, PROPERTY AND DEVELOPMENT DEPARTMENT
MUNICIPAL ACCOMMODATIONS DIVISION
3-65 GARRY STREET, R3C 4K4

PROJECT
WHITTIER PARK
STORAGE BUILDING

838 RUE ST. JOSEPH

SHEET TITLE
MAIN FLOOR PLAN,
POWER, LIGHTING, NOTES & SCHEDULES
ELECTRICAL

SCALE	PROJECT No:	SHEET No:
AS SHOWN	2010-031	E2

DRAWING SHEET SIZE: A1 (841mm x 594mm) PLOT 1:1